

Band Handbook
2011-2012

Table of Contents

	Page
Goals of the West Catholic Band Program	2
2011/2012 Band Leadership	2
Band Camp	3
Marching Band Season	3-4
Concert Band Season	4
Dress Code and Uniform Care	5-6
Attendance	7-8
Varsity Letter Policy	8
More Student Activities	8
Band Boosters/Meetings	8-9
Dates of Fundraisers and Chairpersons	9
How Parents can get Involved	9
Tips	10-11



Goals of the West Catholic Band Program

- To give each student an opportunity for musical growth through individual and group activities.
- To cultivate self-esteem and leadership qualities through membership in a high quality musical organization.
- To have a strong academic impact on each student through music; helping to increase the development of skills in areas of: math, reading, language, reason and memory.
- To build character through competition and public performance.
- To develop a life-long love and appreciation of music.
- To continue to learn to love and serve God through music.



2011/2012 Band Member Officers

Band Director	Mr. Darren LaPrise	233-5931 **
Band President	TBD	See Directory
Band Secretary	Katie Brown	See Directory

**** Please use this contact number or e-mails to reach the director.****



BAND CAMP



Band Camp

Band Camp is always the last full business week (Mon-Fri) of July. It meets from 8am to 4pm at West Catholic.

Students need to bring:

1. Instruments (unless school owned and WC has it) and instrument lyres and flip folders to hold your music (they can be purchased at R.I.T. Music, Marshall, or Meyer music).
2. Comfortable tennis shoes and socks (do not plan on marching in anything non-athletic).
3. Sunscreen (it is an important responsibility to keep your skin healthy during long hours in the sun).
4. Water in jugs or coolers (we do take longer breaks inside, but short breaks are outside and are much more effective if you can hydrate yourself).
5. A bag lunch, lunch is on campus only, at approximately noon every day. Friday the band parents will provide pizza.
6. Pencils and highlighters (you will be lost without them).
7. A positive attitude (band camp is work, but it also is fun and something you will always reflect on when you are older, so cherish the time now).

Do not wear the best clothes that you have in your closet (you will get sweaty, perhaps muddy, wet, etc.) Please note that your dress, although it should be light, must also be appropriate. Clothing deemed too revealing will be changed.

Be there and on time (Band Camp is mandatory and of the utmost importance. Failure to attend may result in the cancellation of your enrollment. If you have any conflicts or concerns, please call Mr. LaPrise at 233-5931.)

Drum Majors, Color Guard and Drum line

Mr. LaPrise chooses the Drum Major(s). There are tryouts, teacher recommendations, and interviews for this position. The previous year's performance is also strongly considered. Discipline, musicianship, character, and leadership are all traits looked for when selecting Drum Majors. They attend a mandatory leadership sessions during the season in addition to the regular band camp.

Mr. LaPrise and the Color Guard Instructor choose Color Guard members and captains. The Color Guard members attend additional rehearsals during the summer and school year.

Mr. LaPrise and the Drum line instructor choose the Drum line members and positions. The Drum line members attend additional rehearsals during the summer and school year.

"I think music, in itself, is healing. It's an explosive expression of humanity. It's something we are all touched by. No matter what culture we're from, everyone loves music." ----- Billy Joel



MARCHING BAND SEASON

Band Responsibilities: Marching Season

count at all competitions. Some competitions are scored with the above-mentioned rating while others are direct competitions with other bands.



DRESS CODE AND UNIFORM CARE

Dress Code: Marching Season (August-November)

Uniforms are provided at no cost to the student, but they are very expensive and should be handled with care. The marching uniforms are fitted to the student during band camp. A staff of parents makes alterations to the uniforms during band camp. If alterations are still needed, please contact Jacquie Zawistowski, or alterations may be done by the parents by merely hemming the excess material. **DO NOT CUT OFF ANY MATERIAL.** The uniforms include a black, green and white jacket, black marching bibbers, raincoat, hat, plume (attaches to the hat), and garment bag. Please note: pants should not crumple at the ankles, nor should they be useful in a flood. In other words, they should not look too long or too short.

A **plain white t-shirt or the assigned band shirt**, turtlenecks, or mock necks must be worn under the jacket and tucked into the marching pants. Also, warm clothing (such as a white thermal shirt and thermal pants) may be worn under the uniform, but they should not be visible during performances.

Uniforms will be left at West Catholic after all home games. Each student will be given a number with a corresponding hanger and the uniform will be put back in the garment bag and hung in the correct slot. There is also a hat closet. Each hat has been labeled with each student's name. The backroom, between the band room and the cafeteria, contains the uniform rack and the hat closet. It is the students' responsibility to make sure the uniforms are returned to the racks neatly.

Students are responsible for all lost or damaged parts. Uniforms must be changed into and out of in designated changing rooms. Totally black marching shoes, **black socks** and **plain white undershirts or band shirts** must be worn for the performance or the student will not participate and will lose credit for that performance. Black marching shoes have been made available to each student. Long hair must be worn up and tucked neatly under the marching hat. The idea is for everyone to look the same or uniform.

Uniforms are to be returned neatly immediately following the performance. There should be care taken to hang the pants at the crease. If the uniforms are wet due to rain, they will be hung uncovered to dry and stored later.

TIP: bring safety pins, bobby pins, and straight pins for emergency repairs to uniforms during performances. If you have extra black socks, it is a good idea to store them in your band lockers (As long as they are clean!).

UNIFORM COSTS:

Custom Marching Jacket	\$190.00
Custom Marching Pants	90.00
Raincoat	36.50
Hat	25.00
Plume for hat	11.50
*Total cost of the uniform	\$353.00



Dress Code: Concert Season (November-June)

Concert Band Uniforms provide a consistent professional appearance to the concert band for performances occurring primarily in the winter months. Students should read and be familiar with the concert band uniform policy

Ladies Uniforms

The ladies concert band uniform consists of a full-length black gown. The gowns were purchased at a cost of \$75.00 by the band and belong to the band. Gowns will be marked with an identifying number to indicate the band student who is responsible for the gown during concert season.

A black closed-toe shoe with a 1" to 2" heel height is required. This is not the time to express your individuality with tennis shoes, etc. The goal is for the group to look professional, mature, and the same. You will need black undergarments.

The only alterations allowed will be to hem the dresses. The hemming will be done by the band booster volunteers. Altering the bodice of the gown will not be allowed, so that the gown can be used in future seasons. Tags should not be removed from the dress, so that the size and laundering instructions are available for future use. Follow laundering instructions carefully. **The gowns are not to be dry cleaned.**

Return of Concert Gowns

At the end of concert season, the concert dresses will be returned to the band room, cleaned and properly labeled as to which student is returning the gown. Graduating seniors should return the gowns within one week of the last concert event.

Men's Uniforms

The men's concert uniform consists of black slacks which were purchased by the band and belong to the band. Men will be required to wear a white dress shirt, **PLAIN** white tee shirt (if one is worn), black tie, black shoes, and black socks. The black marching shoes can be used by men for concert band. This is not the time to express your individuality with tennis shoes, etc. The goal is for the group to look professional, mature, and the same.

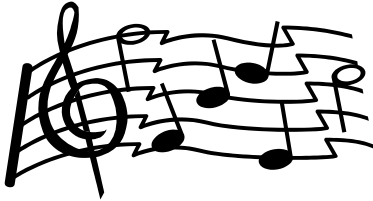
Slacks will be marked with an identifying number to indicate the band student who is responsible for the pants during concert season.

Not acceptable: black jeans or cargo pants, studded belts or chains, ties or shoes with any color other than black, bow ties, nude pantyhose, un-tucked shirts or undone ties (knots must be based at the neck), white t-shirts with writing or print underneath dress shirts.

If any of these criteria are not met, the student will not perform. This will result in a loss of performance credit for each performance in which the student is not allowed to participate. Please know that this dress code will be

enforced. Each performance serves as a graded performance.

TIP: The band must look and sound together. If we look sharp, we will play well. It is proven that when we look our best, our potential for exceptional performance is increased.



Music is a moral law. It gives soul to the Universe, wings to the mind, flight to the Imagination, and charm and gaiety to life and to everything.” ---- Plato

ATTENDANCE

Attendance is one of the determining factors in earning a grade for band. Perfect attendance at all band rehearsals and performances is expected from every member. The following are NOT valid excuses for missing band performances or rehearsals:

- "I didn't have a ride."
- "I overslept."
- "I forgot about it."
- "I have to study for the SAT."
- "I have to work."
- "My mom never woke me up."
- "I got invited by a friend to go out of town last minute."

Attendance at a rehearsal means attendance for the entire length of the rehearsal. If a student has a sports conflict, that should be emailed to the director at least one week in advance.

There will be times, hopefully few, when a member must miss a rehearsal or come late. It is the responsibility of the member to request from the director an excused absence or tardy, and the request should be made a week in advance. An email must be sent to Mr. LaPrise darrenlaprise@grcss.org.

PERFORMANCE OVER PRACTICE (SPORTS CONFLICTS)

See letter to WC Coaches below.

Dear WC coaches,

As our band numbers increase, so do the conflicts with sporting events. Many of you have known me a while and know that I am a fan of HS sports and am willing to work out conflicts. For those of you who do not know me, I wanted to make my position clear. I am willing to be as flexible *as possible*. It is my commitment to allow these kids to be involved in many different areas while they are here at West so as to one day graduate well rounded individuals.

The main thing I ask is that our **performances take precedence over practices**. Our rehearsals (what I call band practice) will never take precedence over games or meets. **Performance conflicts on actual game/meet days should be worked out before hand by the student with coaches and directors**. If practices/rehearsals conflict, they should leave one early and be late for another. The only time we rehearse outside of school is on Tuesday nights from 6:30 to 8:30 through mid

October. Band is a graded activity and should be taken seriously as such. **If a student misses a band event due to an excused absence, they will need to make those up later. If the student is not excused they cannot make it up and they fail that event.** All that being said, I do not want to cost a team a league title because a kid was at a band event either. So the important thing to know is how needed a particular kid is at a particular sporting event. For example, are you playing the "sisters of the poor" where victory is almost certain and you can let a student go? Is the student going to miss a graded band activity to ride the bench? Or is he your starting goalie or quarterback? Is this Varsity, JV, or freshmen competition? All I ask is that these things are all considered. In band, everyone participates and is a factor. Our most important events however, are those in which we march on a field, because if someone is missing, there is a hole in the pictures we create. Parades are more flexible because we are not on a field and someone missing is far less obvious. **Our most important events of the season take place on Saturday October 8th (late morning) and Tuesday October 11th (evening); please think of those as our Districts and Regionals.**

As go your district and regionals, exact times are TBA. As I stated earlier, my goal is to allow students to participate in as many things as they can. My commitment is to be as flexible *as possible* and to keep the communication lines open when it comes to conflicts. However, I also have a responsibility to the hard work our band kids put in and cannot just let kids go without serious reason. This is not different from the way I have handled conflicts any other year; I just wanted to let you all know my approach. I do not want to become someone fighting with you over students. Rather, I would like to support what you do and ask the same from you. I know how hard you coaches work; and your teams all work hard as well. **The bottom line is, band is graded, so if they miss one of our events, it has got to be because there was no other choice.** If any one of you has any questions, you may call me anytime at 233-5931 or e-mail me at darrenlaprise@grcss.org and I will get back to you.

Thanks for all that you do,

Darren LaPrise WC Bands

VARSIITY LETTER POLICY

Band members are eligible to receive a varsity letter in Band if they have completed 2 years in band, and signed up for a 3rd year.

MORE STUDENT ACTIVITIES

Jazz Band(s) and Jazz Combo(s): under the direction of Mr. LaPrise. Practices TBA. They will perform at various locations. Mr. LaPrise and will distribute a separate calendar of events for Jazz Band members only. These groups are by audition only. Auditions are held at the beginning of the school year.

Solo and Ensemble Festival: Students can perform solos or in an ensemble (up to 20 in a group). They perform in front of an adjudicator, and are rated 1-5 (1-best). Soloists play one song with an accompanist. Students can receive medals and certificates for #1 ratings, and will be invited to the State S&E festival. Students will also receive a medal for a #2 rating.

West Catholic Musical: Students who express interest in playing in the musical's pit orchestra are auditioned by Mr. LaPrise.

Band Banquet: Attend end of year potluck and awards presentations.

Band Trips: Approximately every 3 to 4 years, there is a major trip: 1998 Germany, 2001-02 New York City, 2003-04 California, 2006-07 Ireland. 2010-2011 Italy. The band performs on site as part of the trip. Fundraising is used to off-set the cost of the trip. Our next trip may be in the spring of 2014. Smaller trips are also taken, for example, Cedar Point.

Band Outings: The student Band President can organize different activities throughout the year. For example, the entire band may meet to go to the beach, or bowling in the colder months. All events will be

supervised, and all students and parents will be welcome to attend.

West Catholic Band Boosters

The West Catholic Band Boosters organization exists for the purpose of supporting the West Catholic Band. The Band Boosters are involved in several types of support including:

- **Financial** – Through various fundraisers, and the \$25.00 annual student band fee, the boosters are able to provide funds over and beyond the school system funding to cover necessary expenses of the band program. Items paid for through fundraising include: uniforms, competition fees, school instruments, music, postage and mailings, repair of instruments, ½ of the drum major and color guard camps, band camp, and much more.
- **Physical** – The boosters support the band by chaperoning trips and events, providing snacks during special events, towing the equipment trailer, helping to serve beverages and snacks at band camp, maintaining the uniforms, etc.
- **Public**– The boosters promote the West Catholic band to the public by way of mouth, newspaper, radio, or any other media that may prove helpful.

2011 – 2012 Band Booster Officers:

<i>Band Director</i>	Mr. Darren LaPrise	233-5931 darrenlaprise@grcss.org
<i>President</i>	Steven Sacha	See Directory
<i>Vice-President</i>	Deb Schmalzel	See Directory
<i>Secretary</i>	Alice Heitzmen	See Directory
<i>Treasurer</i>	Michelle Jensen	See Directory

Upcoming Fund Raising Activities

Student Directories(Chair: Alice Heitzman)

Christmas Craft Fair Concessions (Chair: Jeannine Mroz)

Shake Your Tail Feathers(Chair: OPEN)

Charity Poker events(Chair: Steve Sacha)

Added fund raising activities may come up during the school year

How Parents can get Involved

Attend Band Booster Meetings – See Schedule of meetings

Consider volunteering for a Band Booster position

President	Vice President
Secretary	Treasurer

Volunteer to help out with the August Band Performance Night & End of Year Banquet

Send out invitations, reserve cafeteria, plan food menu, etc.

Be a New Parent Partner

Support and help answer questions that freshman or new band student parents may have.

Be a Changing Room Guard

Help guard the doors of the designated changing rooms before/after performances.

Be a Bus Riding Chaperone

Parents sign up to ride the bus with the band students. This is a lot of fun, and a great way to get to know the band!

Football Game Refreshments

Provide a cooler of water/pop for the band during the football games.

Help with Uniforms before/after the Games

The uniforms are stored at school, in the back room between the band room and the cafeteria. We need a few parents who can help coordinate picking up and dropping off of the uniforms before and after performances.

Work at the Craft Bazaar Food Booths

The band runs the food booth at the Christmas Craft Fair. Coordinators are needed and many parent and student volunteers make this a fun and profitable fundraiser! Each family donates 2 dozen packaged dessert items.

Support band Fundraising Events

There are several great opportunities to help the band improve and grow each year! Entertainment Books/Fall, Craft Fair Food Booths/Dec, Shake Your Tail Feathers Dinner Dance/January, WC Student Directories/Fall. Chairpersons and volunteers are needed for all these events.

Pull the Band Trailer with your vehicle.

Chaperone Band Trips

Accompany the band on a trip.

School and Band Directories

Organizing school directories and scheduling people to sell the student directories during open houses and conferences.



Miscellaneous

The Band can always use helpers for many other miscellaneous projects during the year to help things run

smoothly. Attend band meetings to find out where your help is needed. If you see a need, offer to help!

Tips

Attend events your child participates in, as many as you possibly can – the high school years go by very fast!

Use your band folder. Keep all correspondence in one place.

Check your e-mail! Both students and parents should read all correspondence! This will help in communication efforts!

Come early to the football games! Pre-Game: Enjoy the band warming up and playing the pre-game songs. A lot of band parents sit behind the band in the bleachers.....Come early and tailgate and get to know the parents!

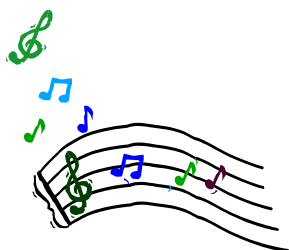
Chaperone or volunteer: What a great way to get to know the band members by name! They are a fun group of kids!

Pray for the band students and instructors!

COMPLIMENT and ENCOURAGE the students whenever possible.

SUPPORT Mr. LaPrise, and all our band instructors in any way possible.

LOOK FOR WAYS YOU CAN PITCH IN AND HELP! (Your child is watching you!)



*“Lord, Thank You for music
today and every day” ---- Mr. LaPrise*